



## MONTHLY BULLETIN

### May 2021 Monthly Bulletin - News and Updates

## NEW Summer Series

*Tackles Today's Most Pressing Issues in GH Homes  
Let's Get Back on Track!*

### EIGHT REASONS TO JOIN THE GREEN HOUSE SUMMER SERIES

**BEGINNING JUNE 9, 2021 - 11AM ET**

Join us on Wednesdays for a power-packed 12-week series weaving together the latest COVID research and Green House best practices.

1

#### CLINICAL EXPERTISE

Geriatrician, Epidemiologist, and staunch advocate for person-directed care, Jonathan Evans, MD equips us with the latest research on all things COVID-related. He will challenge us to always keep in mind the elders and families, and as an active medical director in long term care, his insights are practical and relevant.

2

#### SIMPLE, DOABLE, LOW RESOURCE

Looking for a way to improve your QAPI approach and engage all levels of staff in the quality improvement process? Roger Resar, MD is Senior Fellow at IHI and Emeritus Assistance Professor of Medicine at Mayo Clinic Medical School and expert in practical application of reliable design for quality improvement.

3

#### PEER CONNECTION

Hungering for connection with those that understand the unique challenges and opportunities of Green House homes? These sessions connect us with Green House adopters from across the country to share best practices & lived experiences.

4

#### NATIONAL EXPERT CONTENT

The Institute for Healthcare Improvement (IHI) is a leading innovator, convenor, partner, and driver of results in health and healthcare improvement worldwide. All-new content developed by IHI on today's most timely topics.

5

#### TAILORED TO GH HOMES

These sessions are ABOUT YOU and FOR YOU! Discussions will be shaped based on your input and specifically designed for a person-directed community.

GREEN HOUSE LINKEDUP NETWORK



6

#### NAB & NURSING CREDITS

All sessions will be eligible for Administrator credits through NAB and Nursing contact hours through Maryland Nurses Association. Credits will be given at the conclusion of the series, based on the number of sessions you've attended.

7

#### FLEXIBILITY- ATTEND WHEN YOU CAN

It's summer - the time of get-aways, vacations and time off! Can't commit to attend every session? NO PROBLEM! Each week we'll recap the previous session and sessions will be recorded and sent out to all who have registered.

8

#### TACKLING TODAY'S MOST PRESSING ISSUES

We get that you are EXTREMELY BUSY doing IMPORTANT WORK. These sessions will be relevant, timely, and practical. Need more assistance in QI? One-on-one coaching sessions are available for free.

Join us on Wednesdays for a power-packed 12-week series weaving together the latest COVID research and Green House best practices.

**Starts June 9 - 11AM ET**

**Clinical Expertise/Tailored to GH Homes/  
National Expert Content/Peer Connections  
NAB & Nursing Credits**

**REGISTER ONCE And  
Attend When You Can!**

**CLICK HERE FOR MORE  
DETAILS ON THE SERIES**

**M•E•R•I•T**

Model Enrichment Resource & Integrity Tool

**Organizational  
Outcomes  
Assessment**

**DEADLINE extended to early June!**

*Capturing data is another way of sharing the Green House story and making the case for this model. We need your data!*

This is **NOT intended for all staff** but rather a select few who have access to 2020 data related to: Financial outcomes/Satisfaction outcomes/Staffing outcomes/Clinical data (for assisted living only; SNF data pulled from QI/QM's)

**The assessment has been shortened and only takes about 30 minutes to complete .**

We have **team members ready to walk through the tool with you** and complete it in real-time.

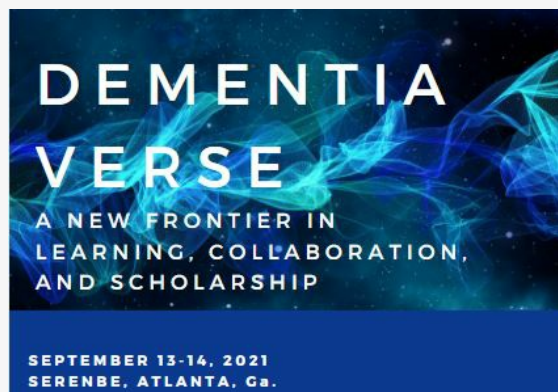
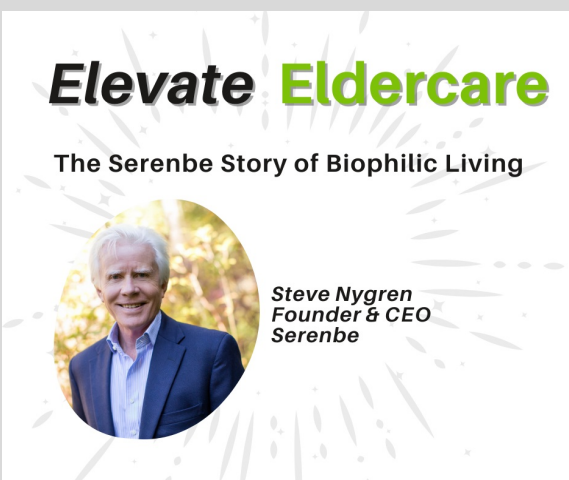
Please reach out to [cdumondstryker@thegreenhouseproject.org](mailto:cdumondstryker@thegreenhouseproject.org) to schedule an appointment.

**A special thank you** to all the organizations that continue to participate in the **COVID Study**. The initial results are being highlighted across a multitude of media channels and creating an awareness about the Green House Model.

## Learn More About the Location of DementiaVerse

In episode 87 of Elevate Eldercare, GHP Senior Director Susan Ryan talked with Steve Nygren, founder, and CEO of Serenbe, a community created as a model to demonstrate that preserving 70 percent of green space interlaced with agriculture, housing, and retail is not only economically viable but is the future of community wellbeing. Serenbe is located in the hill country of South Fulton County, Georgia. It has been called a wellness sanctuary, an environmental prototype, an agrihood, even a utopia.

[Click here to access podcast episodes](#)



## Registration to Open SOON!

"DementiaVerse: A New Frontier in Learning, Collaboration & Scholarship," is a new and exciting event hosted by GHP that will boldly examine dementia care and its relationship to nature, the built environment, nutrition, and the power of socially integrated communities.

Scheduled for Sept. 13 and 14 as a hybrid event, virtual and in person, the onsite portion (with limited availability) will take place at Serenbe, a biophilic community in Chattahoochee Hills, Ga.

[Click here for more details on the exciting lineup of speakers!](#)



## Bite-Size Sessions. Big Impact. Coaching for Supervision

Six half-day virtual sessions  
July 15 - August 19

In GH homes, leaders are called to support individuals and teams through a



coaching approach, balancing support and accountability.  
**The class is designed for Guides, Directors of Nursing, Administrators  
and other coaching leaders.**  
**\$2250.00\***

*\*LinkedUp Dues must be current **Nursing Contact Hours Available***

**Click here to Register for  
Coaching for Supervision**



#### **Questions about Green House Education?**

Marla DeVries, Director of Resource Development [mdevries@thegreenhouseproject.org](mailto:mdevries@thegreenhouseproject.org)  
Mary Hopfner-Thomas, Education Project Manager [mhopfnerthomas@thegreenhouseproject.org](mailto:mhopfnerthomas@thegreenhouseproject.org)



#### **Call to Action!** **We need your gardening pictures!**

We know many of  
you are planting  
already...we would  
love pictures of you  
and the elders making magic in the garden!

Send pictures to:

[mhopfnerthomas@thegreenhouseproject.org](mailto:mhopfnerthomas@thegreenhouseproject.org)



#### **Hello Neighbor!**

*Elders at the GH Cottages of Homewood are truly enjoying  
their new homes and the new opportunities the community  
offers*

The Green House Cottages of Homewood recently opened nine Green House homes to replace their nursing home in Mena, Arkansas. In the first few weeks elders were expressing how they missed seeing some of their friends who now lived in different homes.

Vicki Hughes, long time administrator of the nursing home, let them know that there is nothing stopping them from visiting those friends. Seeing this as an opportunity to honor the core values of “real home” and “meaningful life” Vicki and her staff encouraged elders to visit their neighbors. Elders visiting their friends in other Green House cottages has become a normal part of the community activities. Elders frequently get dressed up to visit friends who live in a neighboring cottages. One elder, with the help of staff, makes her favorite banana muffins to give as a gift to her neighbors.

Each home takes turns hosting “competition day” where elders play checkers, UNO, etc. Elders have become the authors of their day-to-day lives in exciting ways not possible in the traditional nursing home.

Vicki, who has been on the culture change journey for many years stated, “I didn’t realize the possibilities of these cottages. Never in my life did I dream it could happen this way!”





## Development News

We are excited to announce the development of three assisted living Green House homes in Vaughn, WA, located on Vaughn Bay in the northwestern Key Peninsula, approximately 1 hour SW of Seattle.

The Mustard Seed Project of Key Peninsula, is a grass roots effort and the team has been working for years to see this project come to fruition. We congratulate them on their progress and are pleased to help guide them on this journey!



[FOLLOW THEIR PROGRESS ON FACEBOOK HERE](#)



### Green House Homes in Wyoming: A Story of Firsts

The Wyoming Life Resource Center (WLRC) in Lander, Wyo., is a state-owned Green House community that has long served the needs of the Wyoming population and is being rebuilt as the first Green House home to be established as an Intermediate Care Facility (ICF) for people with intellectual disabilities, in addition to housing cottages established as a traditional skilled nursing facility (SNF). In accordance with federal Medicare and Medicaid regulations, this means that WLRC will serve people who have organic brain syndrome, high medical needs, and those who are "hard to place."

[Read more](#)

**First Virtual GH Workshop for Canada**



We are excited to offer this workshop to our prospective GH adopters in Canada. It will include a "lunch & Learn Conversation with Canadian partners. They will discuss what resonates about the model for Canadians, and explore where the opportunities lie for the future.



## Please Welcome our Green House Interns!

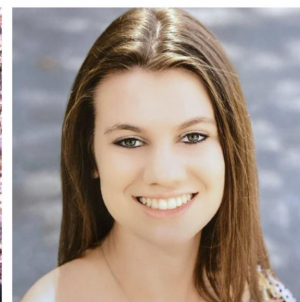
We are most excited to have four interns this summer working with our Green House team!

Top left: **Meghna Datta**  
Duke University, NC

Top right: **Abigail Howell**  
Georgetown University, D.C.

Bottom left: **Ella Lawson**  
University of Mississippi, MS

Bottom right: **Carly Sines**  
James Madison University, VA



[Green House Cottages of Carmel Celebrate 5th Anniversary](#)

[Mor: Time to rethink U.S. nursing home landscape](#)

[The Nursing Home in 2021: What Lies Ahead](#)

[Smaller is Better](#)



### Webinars you may have missed:

Design Series One - April 6  
[Community Connections](#)

Design Series Two - April 20  
[Shared Experiences](#)

Design Series Three - May 4



Join us on **Tuesday, June 15, at 3:00 p.m. Eastern**, with Barbara Patterson-Paul, RN, who will break down the relationship between the Green House process of communication, collaboration, and empowerment and how it impacts regulatory compliance and reimbursement with regard to PDPM.

She will examine the link between documentation and PDPM, identify the steps to perform the PHQ9 and BIMS to ensure accuracy, and discuss processes to improve communication within the interdisciplinary team.

***This event offers 1 nurse contact hour and 1 contact hour for administrators.***

**[Click HERE to Register](#)**



## HAVE YOU BEEN LOOKING FOR A WAY TO CONNECT?

Get signed up in a LinkedUp group:  
Monthly group phone calls to Learn/Share/Network

**NEW Marketing & Communications Group  
will meet again in July!**

**Activity Director Group** - 4<sup>th</sup> Thursday 3pm – 4pm ET

**Guides, Nurses & Educators** – 4<sup>th</sup> Friday 12pm – 12:45pm ET

**Sages** – 3<sup>rd</sup> Tuesday 12pm – 1pm ET (every other month)

Interested in joining a group? Contact: [dwiegand@thegreenhouseproject.org](mailto:dwiegand@thegreenhouseproject.org)



### We are designing a NEW LinkedUp website!

Pardon our "dust" while we work to update resources and information for a more robust and user friendly website for our LinkedUp members!

## THANK YOU TO OUR 2021 GREEN HOUSE SPONSORS!



The Green House Project  
[www.thegreenhouseproject.org](http://www.thegreenhouseproject.org)

